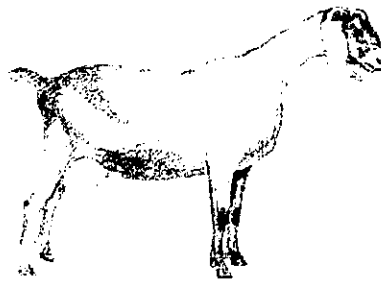


Goat Project Record Book



Name: _____

Address: _____

City: _____ State: _____ Zip Code: _____

4-H Leader: _____ Age as of 1/1current year: _____

Date of Birth: _____

1. Name five different dairy breeds.

2. Name five different goat products.

3. What is the average temperature, pulse rate, respiration rate of a goat?

4. What is the gestation period?

5. What is your least favorite thing about the goat project?

6. What is your favorite thing about the goat project?

7. What do you want to learn more about next year?

Goat Breeds

Identify the breeds of goats by drawing a line to match the picture below with the correct breed name.



Alpine



Boer



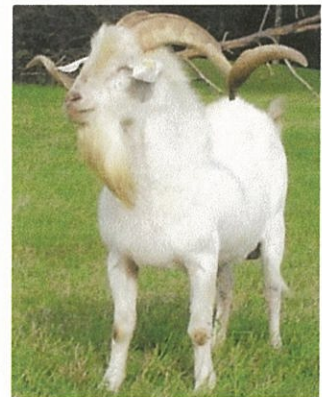
Kiko



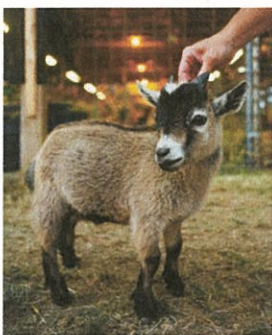
LaMancha



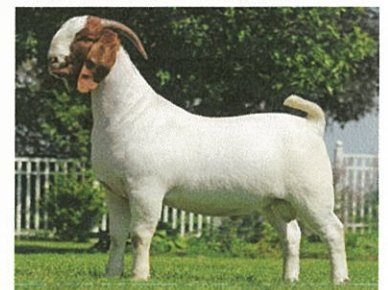
Myotonic



Nubian



Pygmy



Saanen

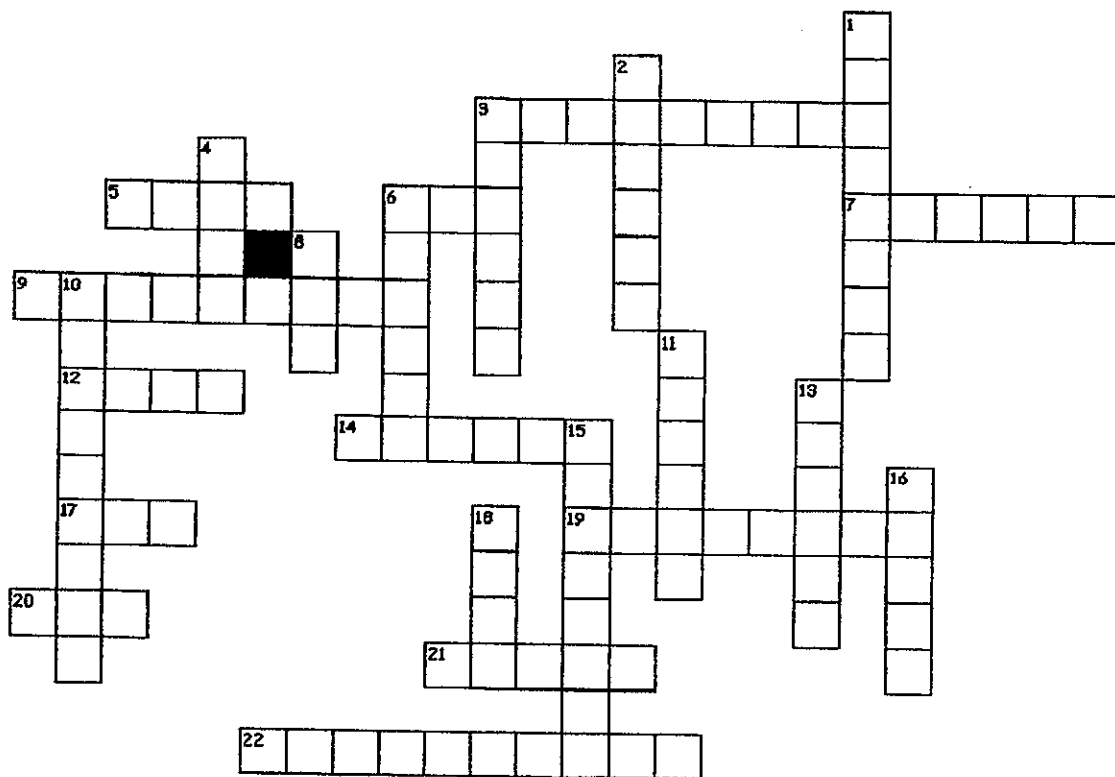


SanClemente



Toggenburg

Goat



Across

3. First milk from a doe after they kid?
5. How many compartments are in a goat's stomach?
6. What is the abbreviation for Caprine Arthritis Encephalitis?
7. Dairy breed that has long droopy ears?
9. What direction are goats led in to the show ring?
12. What is higher in energy: soybean oil, meal, or corn?
14. Castrated male?
17. How many teats does a doe have?
19. What is the muscle condition called that causes Tennessee Fainting Goats to stiffen and even fall over when start?
20. Female goat?
21. Excess gas in the rumen?
22. What is the official USDA identification for goats that are untattooed and unregistered?

Down

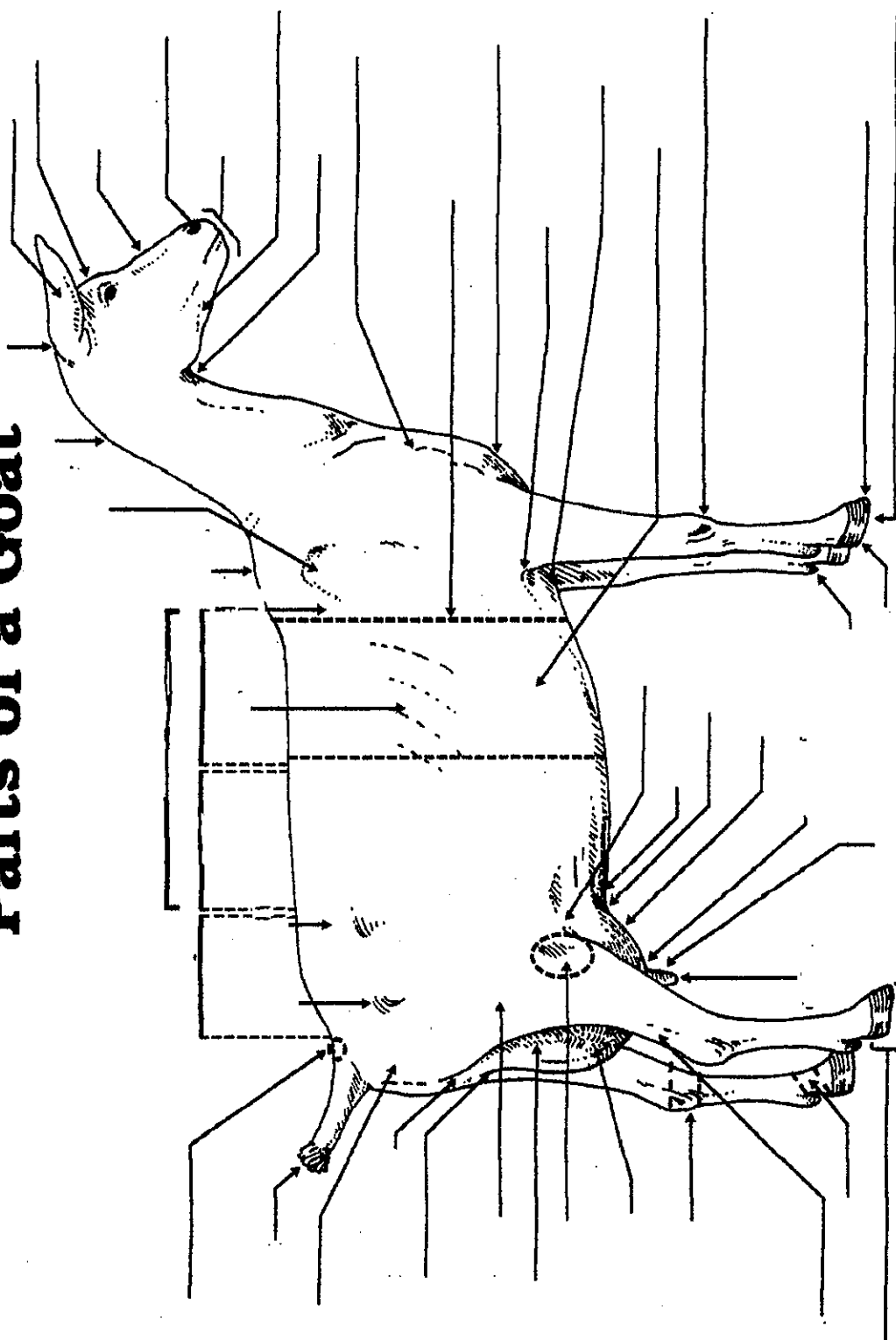
1. Dairy goat breed with tiny ears?
2. What is the fiber from an Angora goat called?
3. Another name for goat meat?
4. Male goat?
6. Cheese made from goat's milk?
8. Baby goat?
10. What do we call the period of time in which a goat is producing milk?
11. Doe who is not milking?
13. Dairy goat breed that's white or cream color?
15. What is a cud chewing animal with a four compartment stomach?
16. What should a goat have at all times?
18. During what season of the year are both dairy and meat does most likely to get pregnant?

4 of 24 words were placed into the puzzle.

Created by Puzzlemaker at DiscoveryEducation.com

Use this poster in conjunction with Parts of a Goat (Dairy) – Match Correct Part Names with Their Locations on the Diagram situation/task statement and identification tags.

Parts of a Goat



Exploratory Learning: Educational Program
 This component adapted from materials of the American Dairy Goat Association
 Product distribution through the Curriculum Materials Service

GOAT
 LEARNING LABORATORY KIT